

# AI Alarm & Notify

ON-PREMISE SOLUTION



CPU: **8 Core** MEMORY: **16GB** SSD: **256GB** AI (LLM): **3B**

**DataTalk AI Alarm & Notify** delivers intelligent, **real-time monitoring** that integrates seamlessly with your equipment, providing instant alerts about irregularities via multiple channels, including SMS, WhatsApp, Slack, and more. Its AI Expert feature allows **direct interaction** with your system for real-time insights and solutions, offering the equivalent of 24/7 expert supervision.

Uniquely, the AI Expert runs directly on your hardware, ensuring your **sensitive data remains on-premises**.



Process alarms from **PLCs**, **IIoT sensors**, **MQTT**, **databases**, etc.



Combine data using a **no-code graphical compute module**.



Set up the **hierarchy and custom filters**.



Notify over email, **SMS**, WhatsApp, **Slack**, **Discord**, and more.

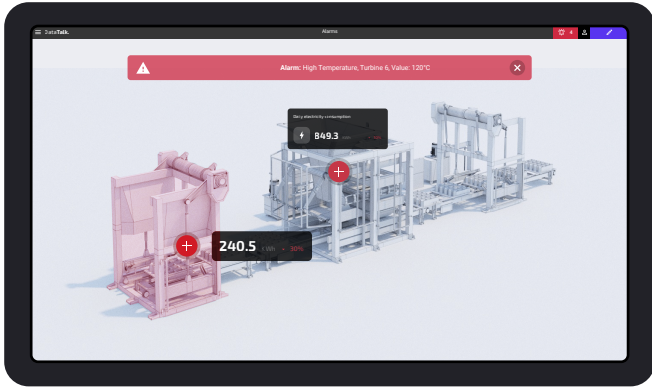


Connect to **AI for smart dialog**.



**Compatible** with existing **SCADA** and **MES** systems.





## Smart alarms

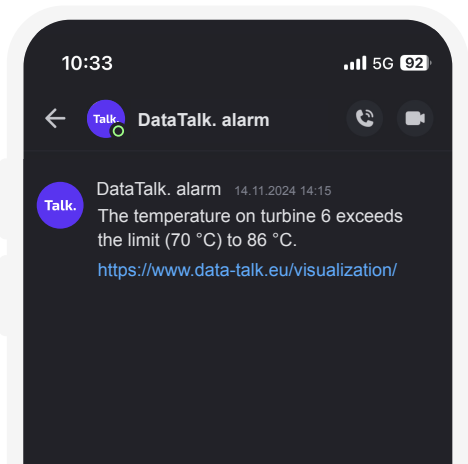
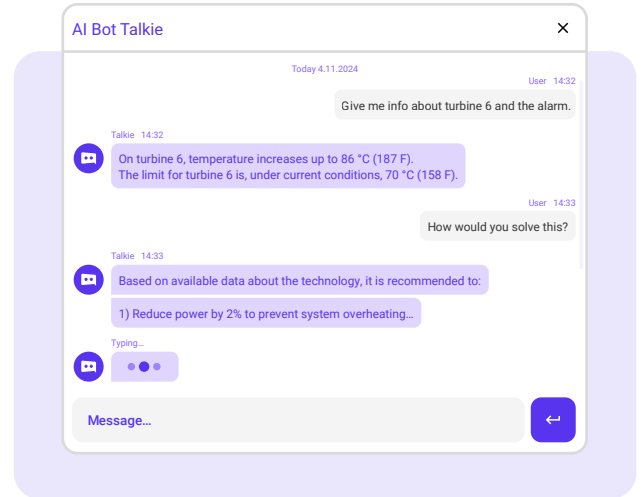
An alarming solution shows current system issues. Alarms can be filtered by priority and time or by customized labels (location, severity, user groups, etc.).

#smart manufacturing #machine monitoring

## Active AI assistance

It is an intelligent coworker with all available information about the technology with whom to discuss possible problems and solutions. It is often able to replace qualified personnel.

#service assistance #production optimization #remote monitoring



## Instant notifications

To ensure quick responses, it alerts users via SMS and email whenever unexpected events occur. Additionally, it connects seamlessly with over 100 apps, such as Discord, Slack, and WhatsApp.

#predictive maintenance #fault prevention #safety

## Block designer

The graphical function block designer is a no-code tool for creating data workflows visually. Drag and drop blocks for calculations, logic, and transformations to integrate PLC tags, IoT sensors, and databases. Build complex logic easily for real-time data processing and insights—no coding needed.

#no code #cross platform data #operational efficiency

